

Q-Etch UF

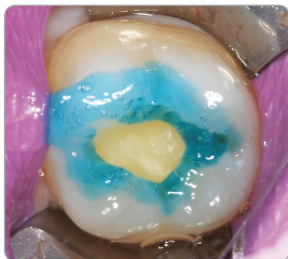
BJM Laboratories

www.bjmlabs.com

Clinician: Dr. Lori K. Brown

CLINICAL PROBLEM:

Traditional phosphoric acid etch can be runny, making selective etching a challenge.



SOLUTION:

Q-Etch UF is a 37% phosphoric acid etch gel with a thickening agent that is designed to stay where you place it. It is blue in color and rinses off easily. I love having the option of a higher viscosity etch!

