



*special holiday edition*



# GUIDE FOR PREFERRED CLIENTS

GORDON J. CHRISTENSEN  
PRACTICAL CLINICAL COURSES

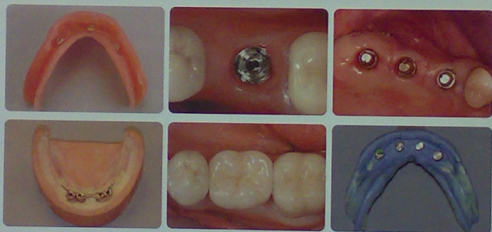


VOLUME 12, ISSUE 6 • NOVEMBER - DECEMBER 2007 • VIP CODE: G1107

**THIS YEAR'S MOST ANTICIPATED VIDEO RELEASE!**  
**SHIPS DECEMBER 2007**

## SUCCESSFUL FIXED AND REMOVABLE RESTORATIONS FOR DENTAL IMPLANTS

ITEM# V2326 (2 CE) | 60 MINUTES | GORDON J. CHRISTENSEN, DDS, MSD, PHD



This video is the most concise and yet complete program you can find on the various aspects of implant prosthodontics. Observe many restorative techniques for frequently occurring clinical situations ranging from single-tooth replacements to full-arch fixed-detachable prostheses and implant-supported overdentures. Be able to plan and produce the best implant prostheses for each situation. Gordon is one of the pioneers in root-form implant surgery and prosthodontics. Share his successes and failures with implant prostheses and incorporate the proven prosthodontic techniques into your practice. Implant prosthodontics can be difficult to understand and complex. This video is directed toward the most simple, predictable, and successful procedures.

**\$159 DVD/VHS**



**PURCHASE 3 TITLES**  
*and receive a*  
**FREE IPOD SHUFFLE**  
*1 gigabyte [ holds up to 240 songs ]*

Purchase any 3 titles from our Holiday Guide, and we'll add a bonus iPod Shuffle to your order - FREE!

Offer is not retroactive and may not be combined with patient education or other discount package offers. Substitutions must be clinical education DVD titles of

your patients should have an occlusal splint to treat bruxism/clenching, TMD, or other occlusal conditions. Occlusal splints are an excellent, staff-oriented, reversible way to augment occlusal therapy. Gordon discusses the key elements of occlusion related to splints, presents the advantages and disadvantages of various splints and the theories for each splint type. Also included is a step-by-step demonstration of a full-arch maxillary splint from working cast to the final seating. Gordon offers practice administration suggestions about occlusal therapy and recommendations to encourage staff involvement and third-party payment. **See how you and your staff can easily make splints and incorporate splint therapy into your practice today!**

## *clinical tip no. 66*

### Cementing Crowns over Single Implants

Cementing a single crown over an implant that is one unit (no screw-retained abutment) or a crown with external screw access to the abutment is easily done with any final cement you prefer.

However, cementing a crown over an implant with a screw-retained abutment without external access to the screw, is a very different challenge. The screw can come loose during service, requiring removal of the crown and retightening of the screw. I have had excellent success using non-eugenol provisional cements. If the screw loosens, the crown can be removed and the screw re-tightened. In cases where screw loosening is anticipated, **Premier Implant Cement** is a better choice, since it is stronger than non-eugenol provisional cements. When using this stronger cement, it should be placed just around the gingival areas of the crown, not filling the entire crown, or you won't be able to remove the crown.

In such cases, final "permanent" cements are usually not indicated. Please see our most recent video, V2326 **Successful Fixed and Removable Restorations for Dental Implants** (front page of this Guide) for details on this topic and many others.